



REELESTATE PARTNERS

LA'S DESIGN-FORWARD LOCATION SERVICE

REP CleanSet™

On-Location Health & Safety Guidelines

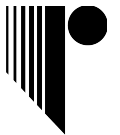
Preliminary COVID-19 Management Practices



INTRODUCTION

In the midst of navigating the recovery phases of COVID-19, Reel Estate Partners has retained renowned Principal Scientist and Microbial Contamination Expert Dr. Richard Wade, PHD to assist in the development of health and safety filming strategies for our valued property owners and location professionals.

Preliminary REP CleanSet™ guidelines have been established and may be adjusted as State, Local and Public Health Officials issue Los Angeles ongoing requirements.



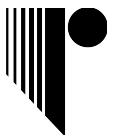
ABOUT

Dr. Richard Wade PhD, MPH, FAIC is a Harvard and Oxford University graduate with post-doctoral training in microbiology, toxicology and risk management. He has worked for the World Health Organization, and was a Director of Public Health for both State and Local governments. Dr. Wade has held academic appointments at the University of California Medical schools and has consulted with companies around the world on the risk management of complex microbiological and chemical issues including Ebola outbreak, H1N1 Virus epidemic, Legionella outbreaks, global PCB poisonings, Exxon Valdez and BP Gulf oil spills, World Trade Center attack, homicide Anthrax deaths following 9/11, Covid-19 pandemic and many other natural and manmade societal issues.

Dr. Wade is an associate of the National Academy of Sciences and recipient of the lifetime achievement award of the American Public Health Association. He served for many years on the Naval Studies Board providing high-level technical advice to the Dept. of Defense.



DR. RICHARD L. WADE
PHD, MPH, FAIC



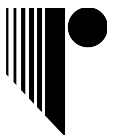
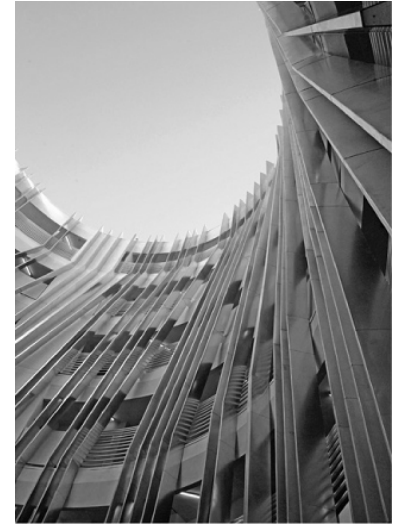
SCOUTING

- To assist location professionals and to minimize initial site explorations, 3D Imagery and or Drone Footage will be provided for most REP locations.
- Each production team may be allowed to physically visit a location up to three times with a predetermined number of attendees.
- All visitors will be required to supply their own personal protective equipment (PPE) and observe social distancing guidelines while onsite at all times.
- Scouting visits that exceed 10 attendees may require surface transmission mitigation & disinfecting post visit.



SITE PLANNING & PREP

- All sets and staging areas will be closed to residents, tenants, building staff and non-essential production personnel.
- Single family homeowners/residents must be relocated prior to the first prep day and through strike, until ATP surface testing results indicate a maximum score range of 20 - 30 RLU units @ 3 tests per 1,000 sq ft.
- If the location is adjacent to a hospital, health center, school or senior center, a physical barrier and isolated HVAC system should be arranged.
- Production Company shall plan to provide Area, Ventilation and Surface Transmission Mitigation & Cleaning/Disinfecting Services as outlined in the chart below for all Prep, Shoot and Strike Days based on the location type and conditions of each site.
- All mitigation providers/vendors must be a certified industrial hygienist trained in Infectious Disease Control. All cleaning supplies must be EPA List N Approved Disinfectant(s).
- In addition to the minimum PPE requirements outlined in the chart, Production Company shall provide adequate daily Personal Infection Control Equipment and Supplies including hand washing stations, ethanol alcohol based hand sanitizer, and disinfecting wipes. Gloves must be provided for crew members sharing equipment and/or for cleaning/disinfecting vendors.



PRODUCTION ZONES

On-location site plans must include separate zoned areas for the following:



ZONE 1

Check-In & Daily
Screening Activities

ZONE 2

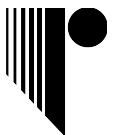
Perimeter Work
Zone for staging
equipment &
personnel

ZONE 3

Production/Set Zone
limited to essential
cast and crew only

ZONE 4

Support, Holding &
Catering Activities
housed outside or on
the street unless
otherwise agreed



ZONING DETAILS

- Each Zone must be separately indicated by barriers, caution tape, signage or other physical identifiers.
- For interior shoots, the maximum number of people allowed inside Zone 3/Production area shall be limited to 25 at any given time unless agreed to separately.
- Production Company shall provide credentials (electronic or physical) indicating approved zone access for each individual on location.
- A single pathway in/out must also be planned for and adhered to.
- Production Company shall present a Food Service Safety Plan that meets Public Health Official and or Industry guidelines. In most cases catering and all other food & beverage activities will be located outside.





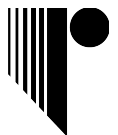
PREP, SHOOT & STRIKE DAYS

In addition to the best practices outlined under Site Preparation, Production Companies must also implement the protocols on the following page:



PRODUCTION PROTOCOLS

- Provide a Daily Screening Protocol for all on location personnel and visitors that includes:
 - Maintaining an Attendance Log for all location cast, crew and visitors
 - Collecting Covid-19 Daily Health Survey Questionnaires in compliance with EEOC Guidelines
 - Temperature Testing with results not to exceed 100.4 degrees for any individual
 - Provide new, Disposable PPE as outlined in the chart.
 - No outside or used PPE or F&B will be allowed inside Zones 1 – 3
- Productions are encouraged to minimize the number of individuals on-location to the greatest degree possible, finding off-site, street level or virtual alternatives whenever possible. Clients and agency personnel should avoid site visits unless absolutely necessary. Predetermined maximum head counts will be established and must be adhered to at all times.
- All on-location personnel shall abide by a six foot social distancing standard.
- Production Company shall appoint a Covid-19 Coordinator to monitor social distancing standards and personal infection control practices with a special focus on confined spaces and potential choke points such as hallways, elevators, Zone 1 Check-in etc.
- Production Company shall remove all used PPE and cleaning/disinfecting supply refuse from the location daily.



PROTOCOLS BY LOCATION TYPE

REEL ESTATE PARTNERS CLEANSET PROTOCOLS

LOCATION TYPE	LOCATION SPECIFICS	LOCATION PREPARATION - AREA DISINFECTING	LOCATION VENTILATION SOLUTION(S)	SURFACE TRANSMISSION MITIGATION & DISINFECTING	PERSONAL PROTECTIVE EQUIPMENT (PPE)	PHYSICAL DISTANCING	SET MEDIC	COVID-19 SAFETY MONITOR	DAILY SHIFT END DISINFECTING	ADENOSINE TRIPHOSPHATE TESTING (ATP)
Outside & Exteriors		Required: Fogger with EPA List N approved disinfectant(s)	N/A	Required: Hourly high touch point & shared equipment wipe down with EPA List N approved disinfectant(s)	Required: Surgical mask with either eyeglasses, safety goggles or face shields for all. Gloves for cleaners, food service and individuals sharing equipment.	Required	Required	Required	Required: High touch point & shared equipment wipe down with EPA List N approved disinfectant(s) Required: Fogger with EPA List N approved disinfectant(s)	Optional: ATP Surface Testing With Score Range @ 20 - 30 RLU units at strike
Warehouses & Sound Stages	Vacant - Unstaged	Option 1: Fogger with EPA List N approved disinfectant(s) Option 2: Location stands empty for 5 days pre-prep	Option 1: Use of Natural Ventilation or Existing HVAC System . Option 2: Mobile or portable air conditioning/heating unit(s) when ventilation to exterior is possible.	Required: Hourly high touch point & shared equipment wipe down with EPA List N approved disinfectant(s)	Required: Surgical mask with either eyeglasses, safety goggles or face shields for all. Gloves for cleaners, food service and individuals sharing equipment.	Required	Required	Required	Required: High touch point & shared equipment wipe down with EPA List N approved disinfectant(s) Required Option 1: Fogger with EPA List N approved disinfectant(s) nightly and at strike and or Required Option 2: location stands empty for 5 days post strike.	Required: ATP Surface Testing With Score Range @ 20 - 30 RLU units at strike
	Staged	Required: Electrostatic Sprayer with EPA List N approved disinfectant(s)	Option 1: Use of Natural Ventilation or Existing HVAC System . Option 2: Mobile or portable air conditioning/heating unit(s) when ventilation to exterior is possible.	Required: Hourly high touch point & shared equipment wipe down with EPA List N approved disinfectant(s)	Required: Surgical mask with either eyeglasses, safety goggles or face shields for all. Gloves for cleaners, food service and individuals sharing equipment.	Required	Required	Required	Required: High touch point & shared equipment wipe down with EPA List N approved disinfectant(s) Required: Electrostatic Sprayer with EPA List N approved disinfectant(s)	Required: ATP Surface Testing With Score Range @ 20 - 30 RLU units at strike



PROTOCOLS BY LOCATION TYPE

LOCATION TYPE	LOCATION SPECIFICS	LOCATION PREPARATION - AREA DISINFECTING	LOCATION VENTILATION SOLUTION(S)	SURFACE TRANSMISSION MITIGATION & DISINFECTING	PERSONAL PROTECTIVE EQUIPMENT (PPE)	PHYSICAL DISTANCING	SET MEDIC	COVID-19 SAFETY MONITOR	DAILY SHIFT END DISINFECTING	ADENOSINE TRIPHOSPHATE TESTING (ATP)
Single Family Residences	Vacant - Unstaged	Required: Electrostatic Sprayer with EPA List N approved disinfectant(s)	Required: Hydroxyl Generator with minimum one full air exchange per hour	Required: Hourly high touch point & shared equipment wipe down with EPA List N approved disinfectant(s)	Required: Surgical mask with either eyeglasses, safety goggles or face shields for all. Gloves for cleaners, food service and individuals sharing equipment.	Required	Required	Required	Required: High touch point & shared equipment wipe down with EPA List N approved disinfectant(s) Required: Electrostatic Sprayer with EPA List N approved disinfectant(s)	Required: ATP Surface Testing With Score Range @ 20 - 30 RLU units at strike
	Staged	Required: Industrial UV-C Lights with minimum 254 micron wavelength and 300 watts power	Required: Hydroxyl Generator with minimum one full air exchange per hour	Required: Hourly high touch point & shared equipment wipe down with EPA List N approved disinfectant(s)	Required: N-95 Respirator and eyeglasses, safety goggles or face shields for all. Gloves for cleaners, food service and individuals sharing equipment. TBD Site Specific: Booties for all interior traffic may be required	Required	Required	Required	Required: High touch point & shared equipment wipe down with EPA List N approved disinfectant(s) Required: Industrial UV-C Lights with minimum 254 micron wavelength and 300 watts power	Required: ATP Surface Testing With Score Range @ 20 - 30 RLU units at strike
Commercial Buildings, Multi-Family Residences, & Schools	Staged or Unstaged	Required: Industrial UV-C Lights with minimum 254 micron wavelength and 300 watts power	Required: Hydroxyl Generator with minimum one full air exchange per hour & existing vents (intake & outakes) taped/covered throughout	Required: Hourly high touch point & shared equipment wipe down with EPA List N approved disinfectant(s)	Required: N-95 Respirator and eyeglasses, safety goggles or face shields for all. Gloves for cleaners, food service and individuals sharing equipment. TBD Site Specific: Booties for all interior traffic may be required	Required	Required	Required	Required: High touch point & shared equipment wipe down with EPA List N approved disinfectant(s) Required: Industrial UV-C Lights with minimum 254 micron wavelength and 300 watts power	Required: ATP Surface Testing With Score Range @ 20 - 30 RLU units at strike



PROTOCOLS BY LOCATION TYPE

LOCATION TYPE	LOCATION SPECIFICS	LOCATION PREPARATION - AREA DISINFECTING	LOCATION VENTILATION SOLUTION(S)	SURFACE TRANSMISSION MITIGATION & DISINFECTING	PERSONAL PROTECTIVE EQUIPMENT (PPE)	PHYSICAL DISTANCING	SET MEDIC	COVID-19 SAFETY MONITOR	DAILY SHIFT END DISINFECTING	ADENOSINE TRIPHOSPHATE TESTING (ATP)
Hospitals & Health Care Facilities	Filming Allowed Only In Non Patient Areas Until Further Notice	Required: Industrial UV-C Lights with minimum 254 micron wavelength and 300 watts power	Required: Hydroxyl Generator with minimum one full air exchange per hour & existing vents (intake & outakes) taped/covered throughout	Required: Hourly high touch point & shared equipment wipe down with EPA List N approved disinfectant(s)	Required: N-95 Respirator and eyeglasses, safety goggles or face shields for all. Gloves for cleaners, food service and individuals sharing equipment Required: Booties for all interior traffic.	Required	Required	Required	Required: High touch point & shared equipment wipe down with EPA List N approved disinfectant(s) Required: Industrial UV-C Lights with minimum 254 micron wavelength and 300 watts power	Required: ATP Surface Testing With Score Range @ 20 - 30 RLU units at strike
Senior Care Facilities	All Filming On Hold Until Further Notice	N/A	N/A	N/A	N/A	N/A	N/A	N/A	N/A	N/A



COVID-19 POSITIVE REMEDIATION

In the event any on-location cast/crew member or visitor tests positive for COVID-19, Production Company shall notify Reel Estate Partners management immediately. Production must be halted until Production Company and Reel Estate Partners agree to a specific COVID-19 remediation plan based on the specific site conditions and number of people potentially affected. Production Company should be aware that a positive COVID-19 infection could result in one or more days delay while Production Company provides additional Area, Ventilation and Surface Transmission Mitigation & Cleaning/Disinfecting Services and until an ATP surface testing results indicate a maximum score range of 20 - 30 RLU units.





CONTACT

For further questions or to discuss
your specific location or production:

(567)FOR-REEL
info@reelestatepartners.com

